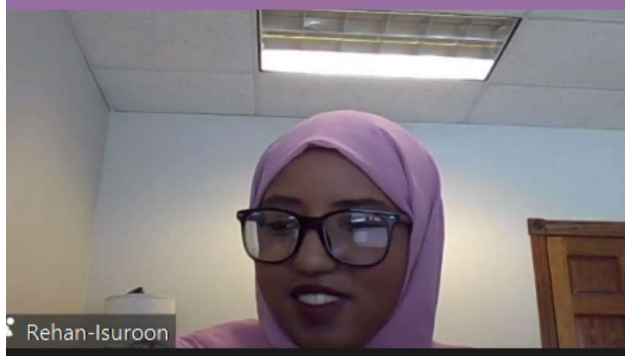
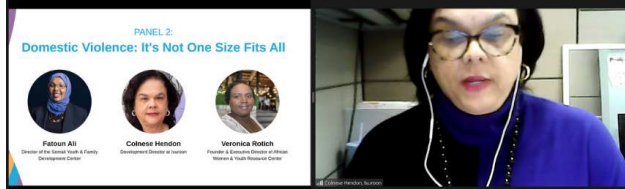




In this Edition of Isuroons's Newsletter!

- International Womens Day overview!
- New Hires!
- Updates on Programs!

INTERNATIONAL WOMENS DAY



We had an amazing turnout for our International Womens Day virtual web conference. Among the amazing panelists kicking us off we had our CEO Fartun Weli who had some powerful and embracing remarks. We also had our very own Colnese Hendon and Rehan Dunkal. Both of them did an amazing job discussing important topics such as Domestic violence and Mental Health.

A Note From the CEO

"I would like to thank all of those who joined and contributed to IWD 2023. Dr, Brooke Cunningham, Suwana Kirkland, Judge Lajune Lange, Ruth Richardson, Fatoun Ali, Veronica Rotich and Elizabeth Ruskin, Rehan Dunkal, Colnese Hendon." "Thank you for a very impactful International Women's Day virtual conference."

Fartun Weli

NEW STAFF ADDITIONS

Name: Ray Sookchain

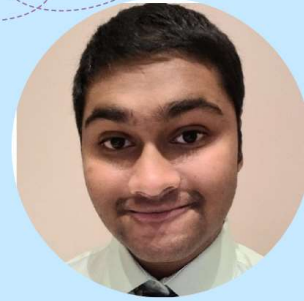
Age: 24

What is your role at Isuroon?

Social Media Coordinator

What is your favorite thing about working here?

Working with coworkers and posting about the organization



Name: Ebony Wilson-Sinkfield

Age: 26

What is your role at Isuroon?

MCH Coordinator/Doula

What is your favorite thing about working here?

My favorite thing about working at Isuroon is, the abundance of learning opportunities, the independence, the flexibility, the encouragement for creativity

Name: Muhebullah Safi

Age: 22

What is your role at Isuroon?

Afghan Interpreter

What is your favorite thing about working here?

Helping people



Name: Alisha Bowen

Age: 26

What is your role at Isuroon?

Legal Coordinator

What is your favorite thing about working here?

I love the openness to creativity and innovation to actively help our client community.



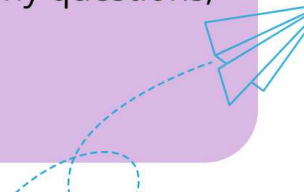
FOOD SHELF



Last month food shelf totals were a success. We served 515 families. Below is our totals for the month of February!

- 5,150 lbs. of Flour
- 2,060 lbs. of Rice
- 1,545 lbs. of Pasta
- 1,130 liters of Extra Virgin Olive Oil

Stop by Tuesdays, Wednesdays, and Thursdays between 10am and 3pm to see it in action. If you have any questions, feel free to call the office at 612-886-2731.

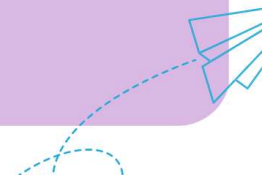


MATERNAL CHILD HEALTH & DOULA SERVICES



Doula is defined as a woman employed to provide guidance and support to the mother of a newborn baby.

In the MCH Sector we have our new MCH Coordinator Ebony Wilson Sinkfield. She will be responsible for all of the Maternal child health and Doula operations at Isuroon. The MCH sector is currently preparing for National Minority Health Month and Black Maternal Health that will be held April 11th-17th.



Thank you for taking the time to read our Newsletter!

Follow Isuroon's Social media platforms below to best stay up to date!



Isuroon (Main Office)

1600 East Lake Street, Suite 1 | Minneapolis, MN 55407
612-886-2731 | communications@isuroon.org

Burnsville Location

1103 Burnsville Parkway, Suite 203 | Burnsville, MN 55337
952-595-5731 | dakota@isuroon.org

Want to change how you receive these emails?
You can update your preferences or unsubscribe from this list.